

# STAVE HOUSE Music Awards Levels 1 - 2 Practice Book

London College of Music - Stave House Music Awards levels 1 and 2.

To enter for this award,  
please email your completed entry form to [info@stavehouse.co.uk](mailto:info@stavehouse.co.uk)



Dunstan the Dragon lives under the ground in his  
cave.



Dunstans note sound is the note D.  
Read and play D.

---

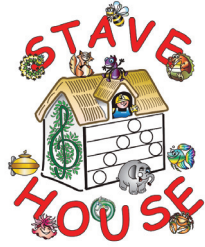
---

---

---

---






---



---



---



---



---



---



**Ferdie the Fox lives in room number 1.  
His note sound is the note F.  
Point to the notes and read F.F.F.F**



**Amos the Ant lives in room number 2.  
His note sound is the note A**

---



---



---



---



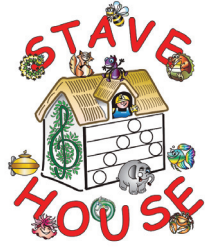
---



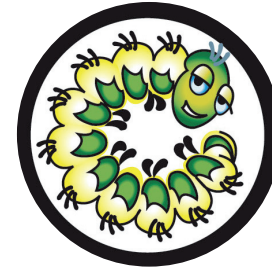
---



**Point to the notes and read A.A.A.A.**



Celia the Centipede lives in room number 3



Her note sound is the note C.  
Can you read this?

Handwriting practice lines with icons:

- Line 1: Blank
- Line 2: Blank
- Line 3: Fox icon, Centipede icon, Centipede icon
- Line 4: Fox icon, Fox icon, Fox icon

Tunes to read using F & A

Handwriting practice lines with icons:

- Line 1: Blank
- Line 2: Blank
- Line 3: Centipede icon, Centipede icon, Centipede icon
- Line 4: Fox icon, Fox icon, Fox icon, Fox icon

Handwriting practice lines with icons:

- Line 1: Blank
- Line 2: Caterpillar icon, Caterpillar icon, Caterpillar icon, Caterpillar icon
- Line 3: Blank
- Line 4: Blank

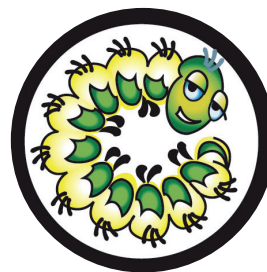


Elaine the elephant lives in room number 4



Her note is the note sound E.

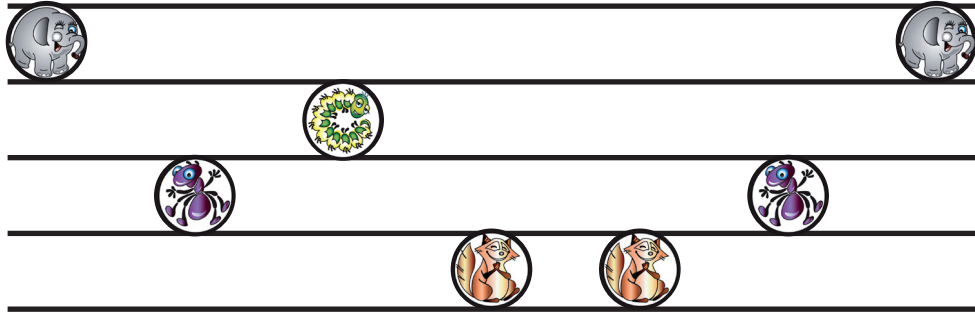
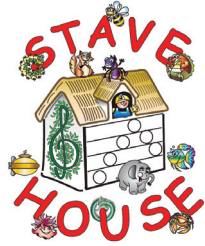
Handwriting practice lines for page 8. The first line contains four circular icons of the elephant. The following three lines are blank for practice.



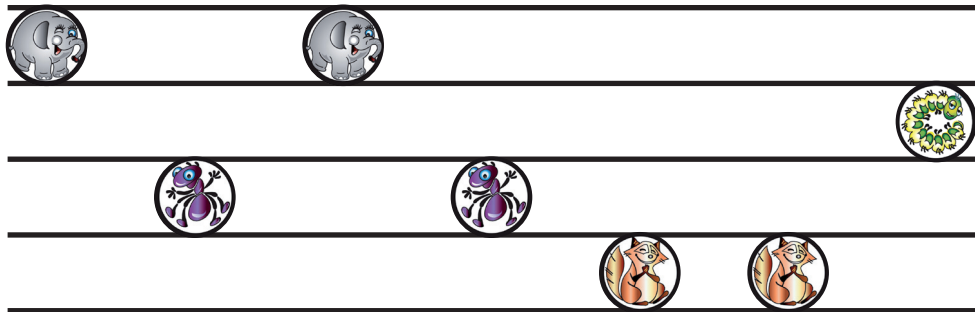
Handwriting practice lines for page 9. The first line contains three circular icons of the elephant. The second line contains four circular icons of the caterpillar. The following two lines are blank for practice.

Tunes to read using C & E

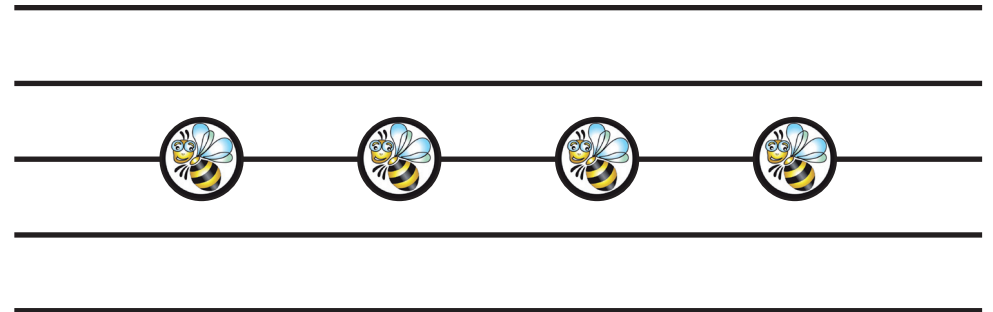
Handwriting practice lines for page 9. The first line contains three circular icons of the elephant. The second line contains two circular icons of the caterpillar. The following two lines are blank for practice.



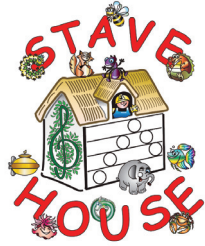
Can you name the notes?



Bee flies in.....



He lands on the Window sill



### Dunstans Submarine the Sea Searcher



Handwriting practice lines for the title. The first line is a solid line, and the following four are dashed lines.

Handwriting practice lines with icons. A large submarine icon is on the left. A vertical line descends from the top line to the bottom line. On the bottom line, there is a fish icon followed by a submarine icon.

Four sets of handwriting practice lines, each consisting of a solid top line and a dashed bottom line.

Handwriting practice lines with icons. A fish icon is on the bottom line, followed by a submarine icon.



Four sets of handwriting practice lines, each consisting of a solid top line and a dashed bottom line.

Handwriting practice lines with icons. A fish icon is on the bottom line, followed by a submarine icon, then a fish icon, a submarine icon, a fish icon, a submarine icon, and a fish icon.

Can you read and play the tune using D and Sea Searcher C ?

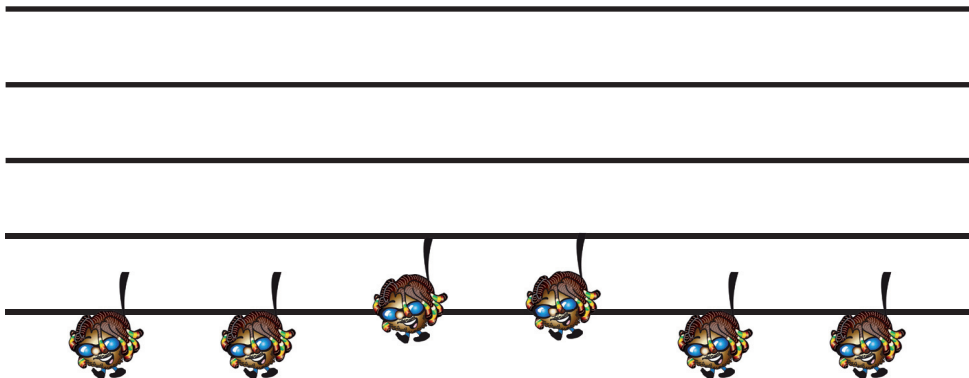


## FATHER CROCHET

He goes for a WALK.

He is visiting Dunstan and the notebuilder on the bottom of the ladder.

Can you Clap and read and play the tune ?

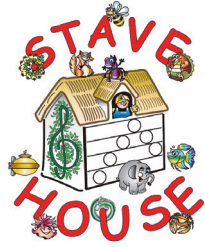


## THE NOTEBUILDER

He is standing on the bottom rung of the ladder where it is Easy.

Low E for easy.





## MOTHER MINIM

She does not want to rush - she calls out 'Wai-t'.  
She visits her friends in Stave House.  
Who is she visiting in this tune ?  
Clap, read and play the tune.

---



---



---



---



---



## UNCLE SEMIBREVE

He eats FOUR big meals a day, but he is still empty.  
Who is he visiting ?  
Clap, read and play the tune.

---



---



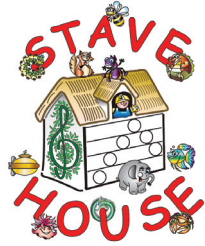
---



---



---



# STAVE HOUSE LEVEL 1 TUNES

Can you Clap read and play these tunes ?





# STAVE HOUSE MUSIC AWARDS

Level 2



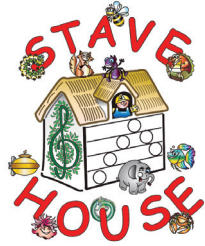


Handwriting practice on page 22. It features four sets of three horizontal lines. The first set has a beekeeper icon on the top line. The second set has a beekeeper icon on the middle line. The third set has a beekeeper icon on the bottom line. The fourth set has a beekeeper icon on the bottom line.

Sing the notebuilder song, name the notes on the ladder and then read the tunes.

Where does bee go ?

Handwriting practice on page 23. It features four sets of three horizontal lines. The first set has a beekeeper icon on the bottom line, a beekeeper icon on the middle line, and a beekeeper icon on the top line. The second set has a beekeeper icon on the bottom line, a beekeeper icon on the middle line, and a beekeeper icon on the top line. The third set has a beekeeper icon on the bottom line, a beekeeper icon on the middle line, and a beekeeper icon on the top line. The fourth set has a beekeeper icon on the bottom line, a beekeeper icon on the middle line, and a beekeeper icon on the top line.



CAN YOU NAME THE NOTES ?

Handwriting practice lines with musical notes represented by icons:

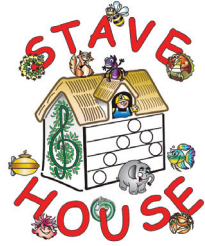
- Line 1: Empty
- Line 2: Empty
- Line 3: Empty
- Line 4: Empty
- Line 5: A yellow and blue striped circle with a horizontal line through the center (middle C).
- Line 6: A cartoon bee wearing a yellow hard hat and blue overalls.
- Line 7: A cartoon mole wearing a red hat and blue overalls.
- Line 8: Empty
- Line 9: Empty
- Line 10: A cartoon ant wearing a purple hat and blue overalls.
- Line 11: A cartoon bee wearing a yellow and black striped hat and blue overalls.
- Line 12: Empty
- Line 13: A cartoon mole wearing a red hat and blue overalls.
- Line 14: A cartoon bee wearing a yellow hard hat and blue overalls.
- Line 15: A cartoon mole wearing a red hat and blue overalls.



CAN YOU NAME THE NOTES ?

Handwriting practice lines with musical notes represented by icons:

- Line 1: Empty
- Line 2: Empty
- Line 3: A cartoon ant wearing a purple hat and blue overalls.
- Line 4: A cartoon bee wearing a yellow and black striped hat and blue overalls.
- Line 5: A cartoon bee wearing a yellow and black striped hat and blue overalls.
- Line 6: A cartoon ant wearing a purple hat and blue overalls.
- Line 7: A cartoon bee wearing a yellow and black striped hat and blue overalls.
- Line 8: Empty
- Line 9: Empty
- Line 10: A cartoon bee wearing a yellow hard hat and blue overalls.
- Line 11: A cartoon bee wearing a yellow hard hat and blue overalls.
- Line 12: A cartoon bee wearing a yellow hard hat and blue overalls.
- Line 13: A cartoon bee wearing a yellow hard hat and blue overalls.
- Line 14: A cartoon bee wearing a yellow hard hat and blue overalls.
- Line 15: A cartoon bee wearing a yellow hard hat and blue overalls.



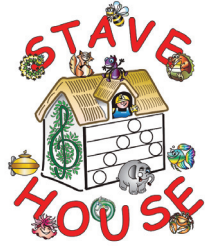
CAN YOU READ THESE TUNES?

Handwriting practice lines for page 26. The first line is empty. The second line is empty. The third line is empty. The fourth line contains six circular icons: a worker, a mole, a worker, a mole, a mole, and a worker. The fifth line is empty. The sixth line is empty. The seventh line contains six circular icons: an ant, a bee, a worker, a mole, an ant, and a bee. The eighth line is empty.



CAN YOU READ THESE TUNES?

Handwriting practice lines for page 27. The first line contains five circular icons: a worker, a mole, a worker, a worker, and a mole. The second line is empty. The third line is empty. The fourth line is empty. The fifth line contains three circular icons: a mole, a worker, and a worker. The sixth line contains one circular icon: an ant. The seventh line contains one circular icon: a worker.



# FATHER CROTCHET

He likes to go for a WALK

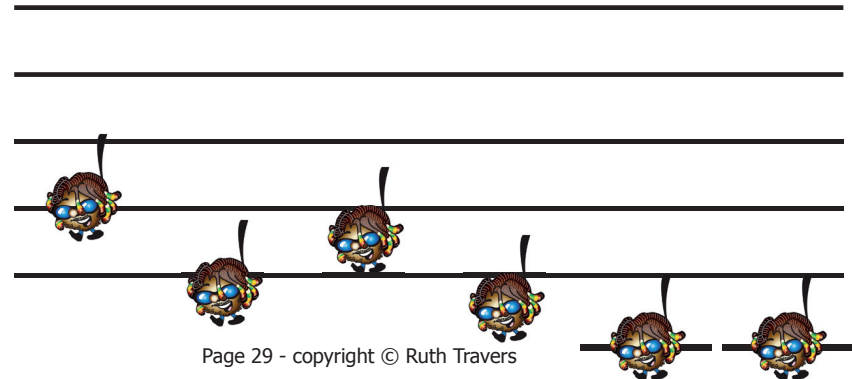
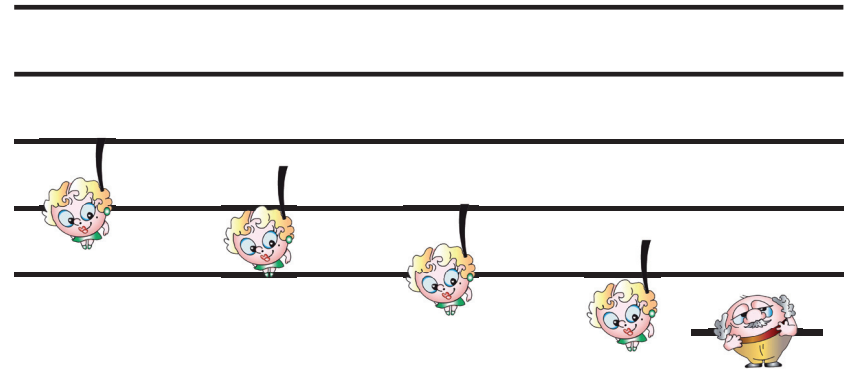
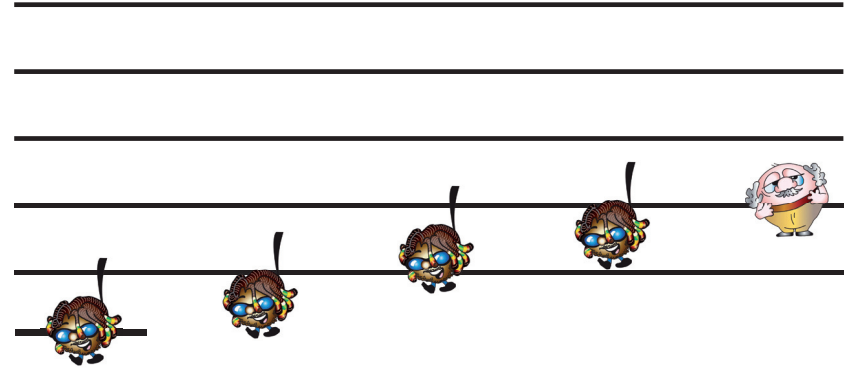


# QUAVER TWINS

They hold hands and go Jog-ging.  
Make sure you give them two claps.



Clap the pattern, play the tune.





### MOTHER MINIM

Hold your hands together and keep them closed when you clap Wait



### MOTHER MINIM'S DOG

When her little Dog is with her, Mother minim gets an extra count, 2 for her and one for the dog Wait for 23. Keep your hands closed.



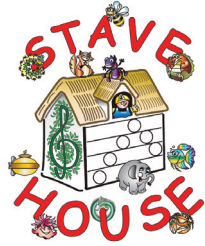
### UNCLE SEMIBREVE

Clap and then keep your hands closed while you count wait234



### CLAP THESE PATTERNS





If you add all these rhythm characters together.  
How many counts do you have ?



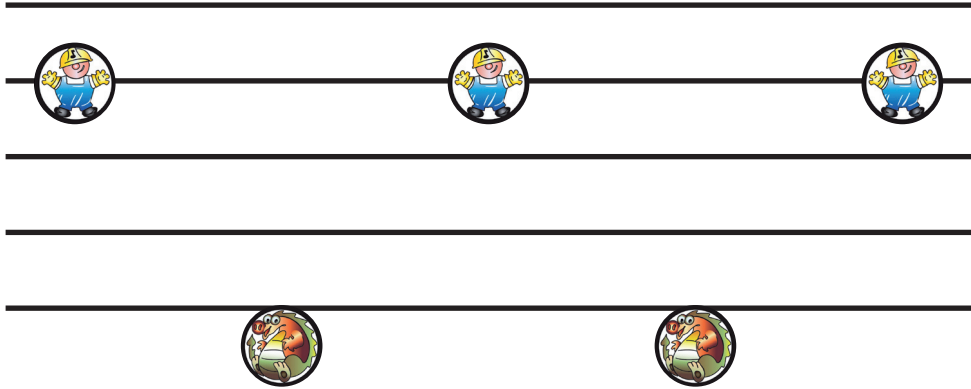
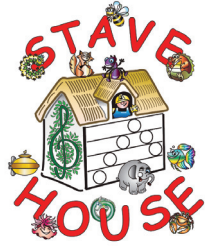
## High & Low

High & Low

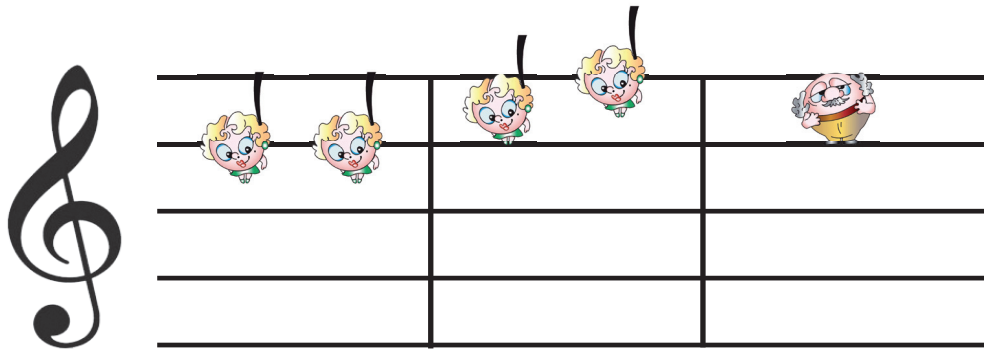
Four elephant icons on the top line of the first staff.

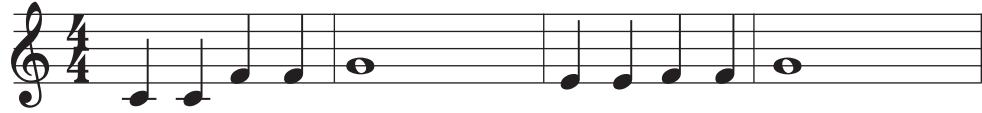
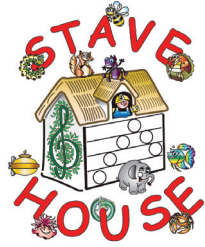
Four construction worker icons on the middle line of the second staff.

Three fox icons on the bottom line of the third staff.



# STAVE HOUSE LEVEL 2 TUNES





# Dunstan the Dragon

Ruth Travers, arranged by Laura Tuck

Pn.

Dunstan The Dragon Lives

Pn.

3 Under The Ground In A

Pn.

5 Cave That Leads Down To The

Pn.

7 Sea He

Pn.

9 Likes To Breathe Smoke Its His

Pn.

11 Fav Ourite Joke And The

Pn.

13 Note He Likes Best Is The

Pn.

15 D

Pn.

17 Oh What A Secret I,m

Pn.

19 Glad That I Know

Pn.

21 Dunstan The Dragon Is

Pn.

23 Living Be Low.

# The Note Builder

Ruth Travers, arranged by Laura Tuck

1

C Em Dm G G C

It's ea - sy, ea - sy stan-ding on the bott-om rung. Gett-ing hard - er, gett-ing high - er.

5

C Em Dm G G C C7

Bang the nails in, bang the nails in one by one. Dec-or-ate de-light-full-y on rung num-ber four.

9

F G C Am Dm G C C7

Fin-ish of the roof, fin-ish off the roof, fin-ish off the roof on rung num-ber five.

2

13

F G C Am Dm G C

Fin-ish off the roof, fin-ish off the roof He climed the la-dder one two three four five!

# I Can Clap In Time

Ruth Travers, arranged by Christine Ritchings

I can clap in time  
 I can clap in time  
 Listen to me clap  
 Crotchets in time  
 Clap clap clap clap clap clap clap .  
 Clap clap clap clap clap clap .

Then with quavers, minims, semibreves  
 I can tap/play/beat/pluck (strings)  
 wave/walk/jump/ bounce  
 Listen to me/ watch me while I .....  
 Crotchets in time

# Here Is A House

Ruth Travers, arranged by Laura Tuck

Musical notation for the first system, measures 1-4. The key signature is one sharp (F#) and the time signature is 6/8. The melody is on a treble clef staff, and the accompaniment is on a grand staff (treble and bass clefs). Chord diagrams for G and D are shown above the staff. The lyrics are: 1. Here is a house with four rooms, the song has be - gun. \_\_\_\_\_  
2.3.4. See block lyrics

Musical notation for the second system, measures 5-8. The key signature is one sharp (F#) and the time signature is 6/8. The melody is on a treble clef staff, and the accompaniment is on a grand staff. Chord diagrams for G, C, Am, G, D, and G are shown above the staff. The lyrics are: 5 Can you see who I can see, liv - ing in num - ber one? \_\_\_\_\_

Musical notation for the third system, measures 9-12. The key signature is one sharp (F#) and the time signature is 6/8. The melody is on a treble clef staff, and the accompaniment is on a grand staff. Chord diagrams for G and D are shown above the staff. The lyrics are: 9 Fer - die the fox, \_\_\_\_\_ Fer \_\_\_\_\_ die the fox, \_\_\_\_\_

Musical notation for the fourth system, measures 13-16. The key signature is one sharp (F#) and the time signature is 6/8. The melody is on a treble clef staff, and the accompaniment is on a grand staff. Chord diagrams for C, G, D, and G are shown above the staff. The lyrics are: 13 Fer - die the fox, \_\_\_\_\_ lives in num - ber one. \_\_\_\_\_

2. Here is a house with four rooms, bright and new.  
Can you see who I can see living in number two?  
Amos the ant, Amos the ant,  
Amos the ant lives in number two.

3. Here is a house with four rooms, tall as a tree.  
Can you see who I can see living in number three?  
Celia the centipede, Celia the centipede,  
Celia the centipede lives in number three.

4. Here is a house with four rooms, there aren't any more.  
Can you see who I can see living in number four?  
Elaine the elephant, Elaine the elephant,  
Elaine the elephant lives in number four.

# Rhythm Family Song

Ruth Travers, arranged by Laura Tuck

Chord diagrams: D, D, G, D

Fa-ther crot chet comes from Ja-mai-ca, he likes to go for a walk by him-self. The

Chord diagrams: D, G, Bm, A

mak-ing mu-sic. Jogg-ing walk, jogg-ing walk. It's fun you see, mak-ing mu-sic with the

Chord diagrams: G, G, D

5

qua-ver twins are ve-ry fit and they'll o-ver take ya, jogg-ing ev-ery-where is ve-ry

Chord diagrams: D, G, D, A, D

16

rhy-thm fa-mi-ly. Mo-ther min-im is so Eng-lish, she does - n't run. In

Chord diagrams: G, G, D, A

8

good for their health. Walk jogg-ing, walk jogg-ing, mak-ing mu sic. Walk jogg-ing, walk jogg-ing

Chord diagrams: E, A, G

21

fact she is ve-ry un-fit. She can't keep up with an-y-one. Walk, jogg-ing, wait.

26

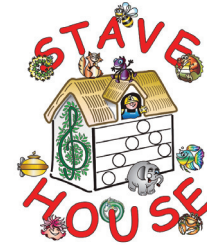
D A D G

Walk, jogg-ing, wait. Walk, jogg-ing, wait. Walk, jogg-ing, wait. Jogg-ing, walk, jogg-ing, walk,

30

Bm A D

it's fun you see, mak - ing mu - sic with the rhy - thm fa - mi - ly!





**ENTRY FORM 2014:  
UK**

**STAVE HOUSE MUSIC AWARDS**

**SECTION 1: TEACHER DETAILS**

Name: \_\_\_\_\_

Teacher code (if entered previously): \_\_\_\_\_

Qualifications: \_\_\_\_\_

Address: \_\_\_\_\_  
\_\_\_\_\_  
\_\_\_\_\_

Postcode: \_\_\_\_\_

Tel (day): \_\_\_\_\_

Email: \_\_\_\_\_

Please state which details above have changed since your previous entry (if applicable):  
\_\_\_\_\_

Please tick if this is your first entry.

I agree to abide by the LCM Examinations Regulations, as detailed in the current syllabus.

I confirm that the candidate has achieved all Part A requirements, as listed on the checklist overleaf.

I confirm that the candidate's parents/guardians have given permission for LCM Examinations to view the performance of their child. It will be used for assessment only, and not for any other purpose.

Signature: \_\_\_\_\_

**SECTION 2: CANDIDATE DETAILS**

Name: \_\_\_\_\_

Candidate ID (if entered previously): \_\_\_\_\_

Date of birth: \_\_\_\_\_ Gender (M/F): \_\_\_\_\_

Award Level (please circle) Level 1 Level 2

**SECTION 3: SUBMISSION** (circle as appropriate)

Video submission method: DVD Email

Part A requirements included on video submission:

No. \_\_\_\_\_ No. \_\_\_\_\_

Performance: Solo Duet

Duet partner (if applicable): \_\_\_\_\_

**Notes**

1. Complete Sections 1, 2 and 3 clearly, in block capitals.
2. Complete the checklist for the relevant award on the reverse of this form.
3. All correspondence about this exam will be sent to the address provided in Section 1.
4. The teacher's name and qualifications will be printed on the candidate's certificate as given in Section 1, unless indicated otherwise.
5. Entries may be submitted at any time; the standard LCM closing dates are not applicable.
6. Payment may be made by cheque (payable to 'Stave House') or by bank transfer: Account No: 17979528 Sort Code: 600513
7. **Send this entry form (with DVD and cheque, if applicable), to:**  
**Stave House**  
**433 Beehive Lane**  
**Galleywood**  
**Chelmsford**  
**Essex CM2 8RJ**

Stave House Music Award	2014 Fee
Level 1	£12.00
Level 2	£15.00

LCM Examinations  
University of West London  
St Mary's Road  
Ealing  
London W5 5RF  
T: 020 8231 2364 E: lcm.exams@uwl.ac.uk  
www.uwl.ac.uk/lcmexams

The checklist for the appropriate award level must be completed prior to submission of this form. Please insert the date when each requirement was satisfactorily achieved.

**Stave House Music Award 1**

	Requirement	Date achieved
1	Place the characters on the board in the correct <u>spaces</u> (pages 16-17).	
2	Place B, Middle C and Middle D (bass clef: place Middle C and Middle B) on the board in the correct places (pages 14, 21 & 23, or bass clef story).	
3	Make a 3-note tune on the board, read it aloud, and play the notes on any instrument (page 23).	
4	Recognise crotchets, minims and semibreves (pages 24-27).	
5	The teacher will clap a rhythm, using crotchets, minims and semibreves. The child will clap back the rhythm, and then make a pattern on the board using the appropriate rhythm family characters.	
6	The teacher will make a pattern on the board, using crotchets, minims and semibreves. The child will clap the rhythm.	
7	The teacher will specify a rhythmic value. The child will place the rhythmic value on the board, and state how many counts it is worth. The child will then be asked to find that rhythmic value in the music he or she is playing. (Example wording: "Can you find mother minim in your piece? Whose note has she decided to make?")	
8	The teacher will specify a note by pitch and rhythmic value, and the child will place the appropriate rhythm character on the correct line or in the correct space on the board for the note requested. The teacher will then ask the child to find the note of that length in their music. (Example wording: "Could you show me a crotchet making an E?", "Could you show me a semibreve making a D?")	

**Stave House Music Award 2**

	Requirement	Date achieved
1	Know all the notes of the treble clef from Middle C to high F.	
2	Treble clef: place the note builder on any line (pages 28-29) OR bass clef: put father crotchet on a requested bass line.	
3	Make a 5-note tune and read the notes aloud from the board.	
4	Turn the 5-note tune into a short phrase with rhythm by replacing the note characters chosen with members of the rhythm family. Read aloud in the rhythm chosen.	
5	Clap a pattern made on the board by the teacher, recognising crotchet, quaver, minim, dotted minim and semibreve note values.	
6	Distinguish between low and high notes that have the same name (pages 23, 27, 29 & 31), and demonstrate this on the board.	
7	Be able to make a requested number of beats. (Refer to syllabus for full details).	
8	Look at a simple piece of sight reading, clap the rhythm and read the notes aloud in rhythm.	