



# BASS CLEF PLAY BOOK

Name \_\_\_\_\_



## Sheet 1

**DUNSTAN** likes to go exploring  
the Bass Clef Ocean.

---

---

---

---

---

Travelling in his submarine, the Sea Searcher,  
he goes  
As Far Down Below (as he can) Go.



## Sheet 2

Point to the lines on your board, starting at the  
top and moving your finger down as you speak  
- say . . . . .

As \_\_\_\_\_

Far \_\_\_\_\_

Down \_\_\_\_\_

Below as he can \_\_\_\_\_

Go \_\_\_\_\_



## Sheet 3

### Game 1

Play games with a grown-up, choosing a member of the Rhythm family and putting the character on a line - tell the grown-up which line you chose.

### Game 2

Put father crotchet on the line for 'As'  
Now put him on the line for 'Go'  
Move him to the line for 'Far', etc.



## Sheet 4

### Game 3

Point to a line on the board and find a note on that line in a music book.

Say: Father crotchet is on the line for 'Far', he is making the note 'F'.

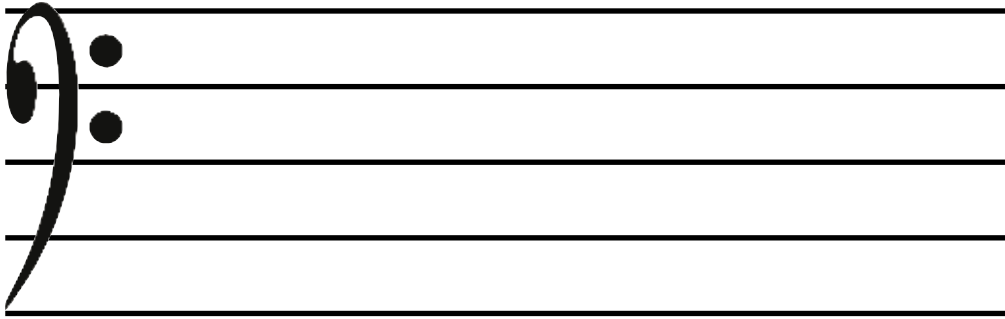
### Game 4

Using the Rhythm family - Position the characters on different Bass lines - Read the notes that each character has chosen to be,



## Sheet 5

Draw in the notes:-



**D** - for Down

**F** - for Far

**A** - for As

**B** - for Below

**G** - for Go

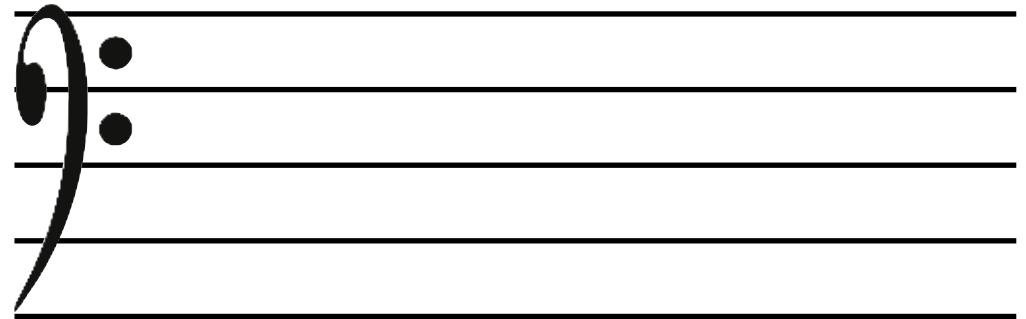


## Sheet 6


On your board - choose a bass clef line and make a rhythm with the rhythm family.

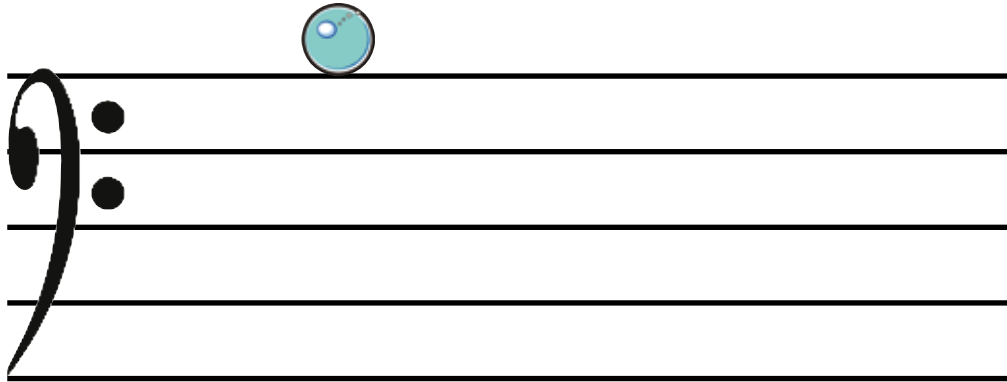
Which line did you choose?

Draw the rhythm you made here on the note you chose.



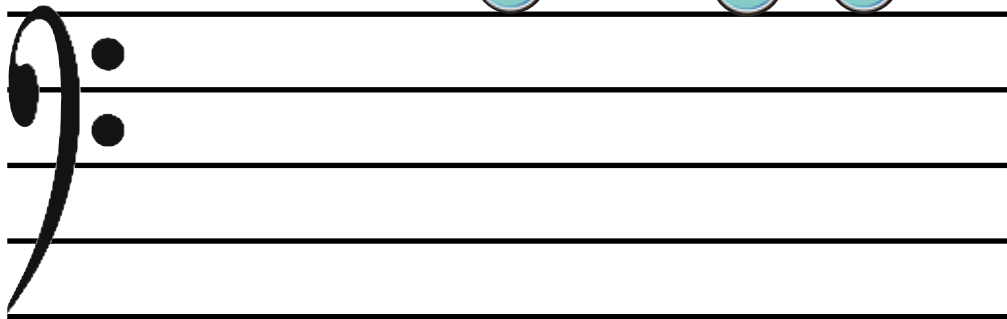
## Sheet 7

As the Sea Searcher  Splashes down into the Bass Clef ocean a bubble appears floating at the top of the ocean.



**B** for **B**ubble

Here is a tune using c and b. Can you read it?



If you play the piano - you can play this tune with your left hand.



## Sheet 8

Make a tune using c - Sea Searcher, b for Bubble and a for As



Draw in the notes.

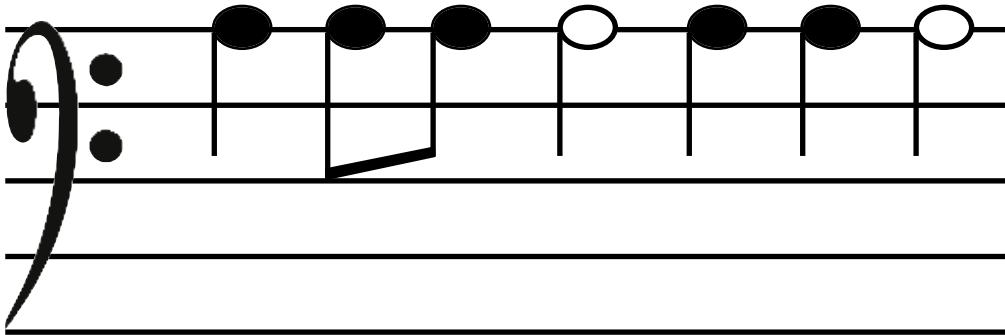


a c b c b a b c



## Sheet 9

If you play the cello - play some bass clef 'A' notes to this rhythm.



Using your board:

Can you put Mother Minim on the 'F' line for 'Far'  
Father Crotchet on the 'A' line for 'As'  
Father Crotchet where 'B' for 'Bubble' goes  
and Uncle Semibreve on the 'D' line for 'Down'



## Sheet 10

A's



G's



Which are the higher sounding ones?  
Which are the lower sounding ones?

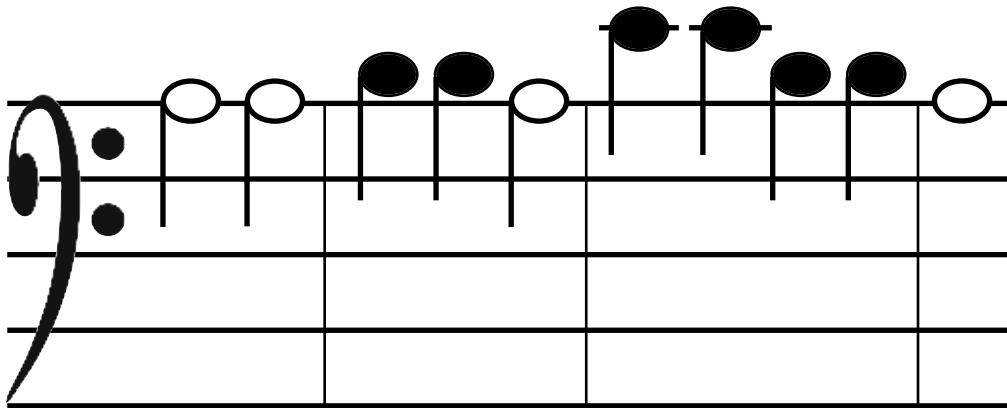


## Sheet 11

Using the Rhythm family characters -  
make a rhythmic tune using the lines of the bass clef.

Clap your rhythm and read your notes aloud.

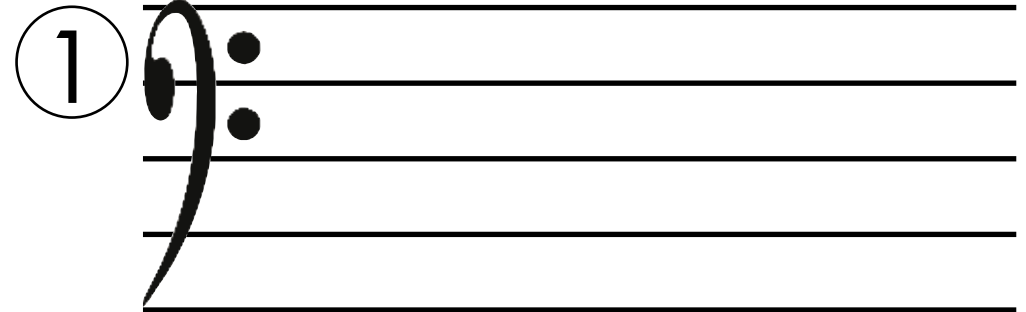
Can you play this tune?



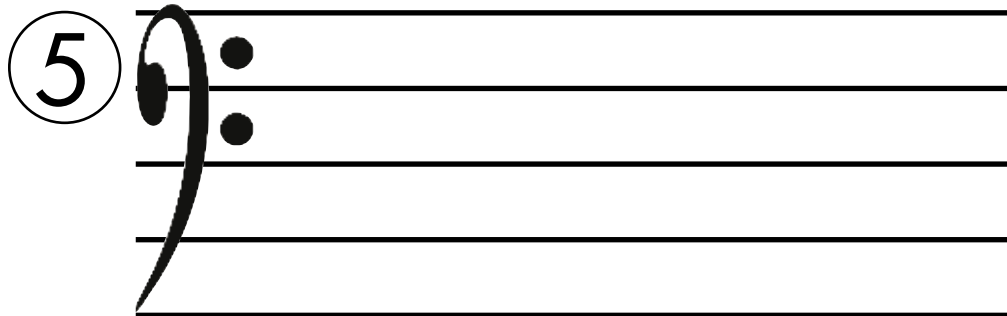
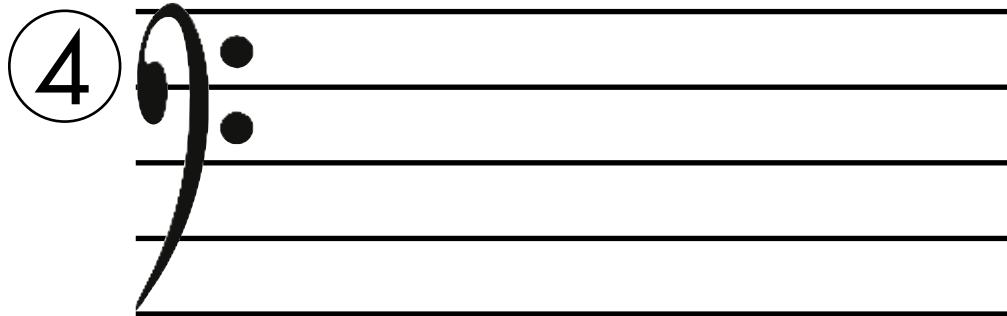
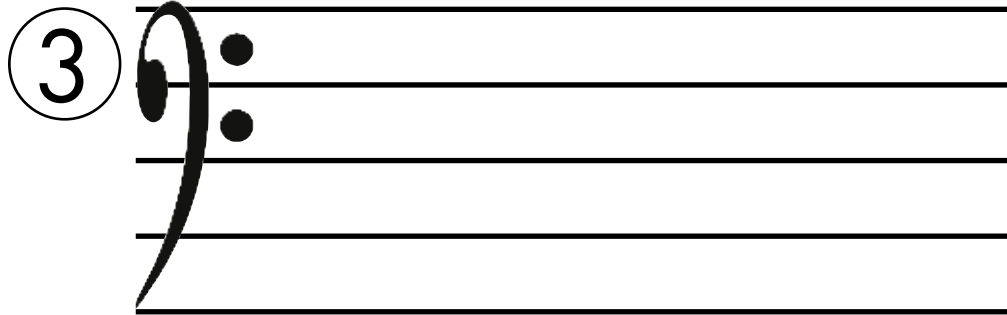
## Sheet 12

Make some tunes on your board using all the lines  
of the bass clef with your Rhythm family characters.

Copy the tunes into your book.



## Sheet 13



## Sheet 14

Make a tune with the Rhythm family characters on your board using c, b, a, g.

Mix the notes up - then put them in the correct places.

Ask a grown-up to call out:

'Sea Searcher'    'Bubble'  
A for 'As'    and    Guppy

Can you put them in the correct places on your board?

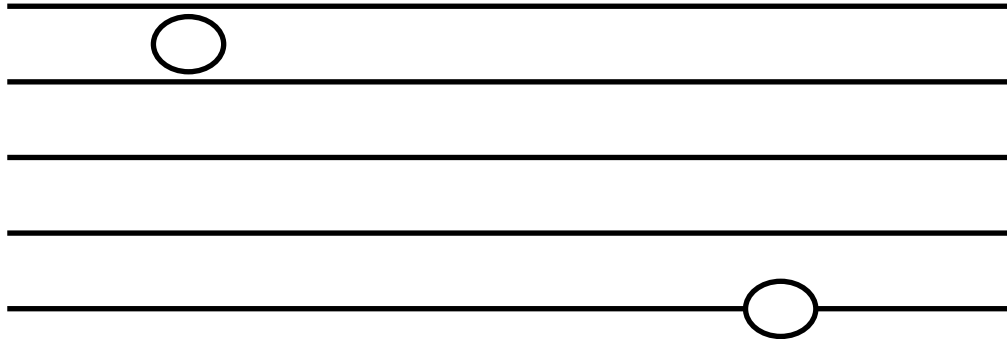


## Sheet 15

Ask a grown-up to make a board tune for you using c, b and g.

Use an extra set of characters to make a longer tune.

high and low -



a high sounding  
bass G for Guppy

a very low sounding  
G for 'Go'



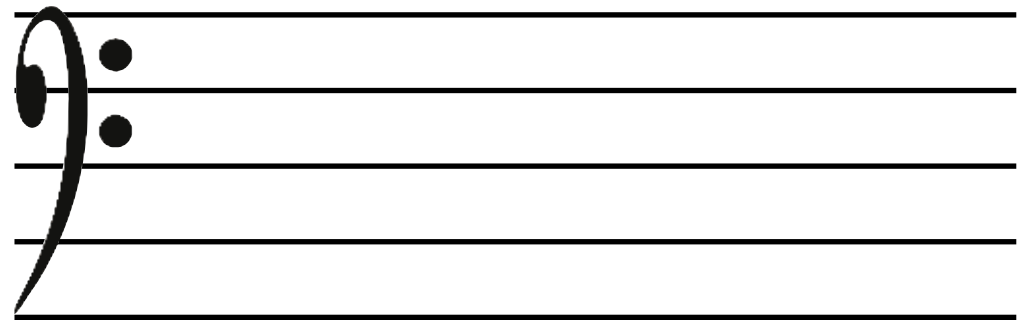
## Sheet 16

The next creature that Dunstan spots is an **E**el.



**E** for **E**el.

Draw in the notes.



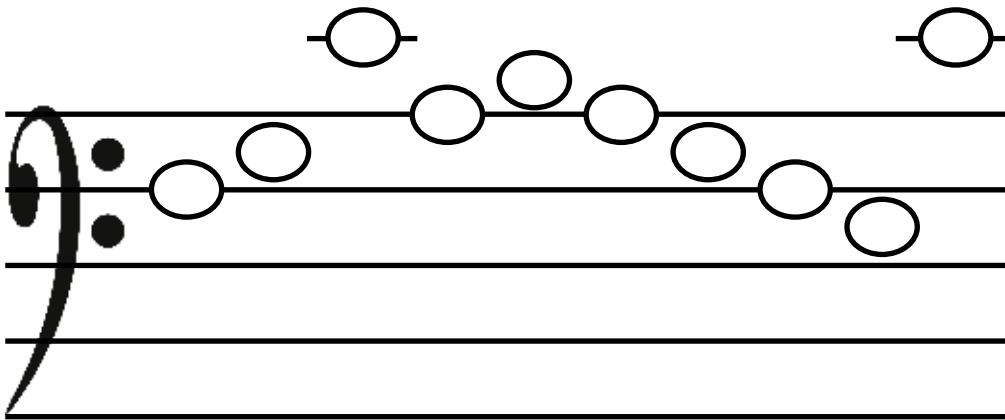
g g e g e g e e g



## Sheet 17

Using the story so far and the sentence 'As far Down Below (as you can) Go' :-

Name these notes



## Sheet 18

The last thing that Dunstan sees right at the bottom of the ocean growing on the coral rocks is a very pretty **A**nemone.



**A** for **A**nemone.



## Sheet 19

On your board  
play the mix up game  
with the  
bass clef sea creatures.

Ask a grown-up to take one away  
so that you can say who is missing.



## Sheet 20

Using extra sets of bass characters - Guppy,  
Crab, Eel, Anemone -

make these tunes on your board.

① g b a c <sup>middle</sup>  
c

② e e g c a a c



## Sheet 21

③ c a e g c e g

④ a a c e c g e

⑤ g e c a c e g

⑥ c c g e g a a



## Sheet 22

Using the Rhythm family characters make a pattern to clap:-

on the line - **F** for Far

on the line - **B** for Below

on the line - **D** for Down



## Sheet 23

on the line - **A** for As

using the lines - **B** and **D**

using the lines - **F** and **A**

using the lines - **G** and **B**

using any of the lines.



## Sheet 24

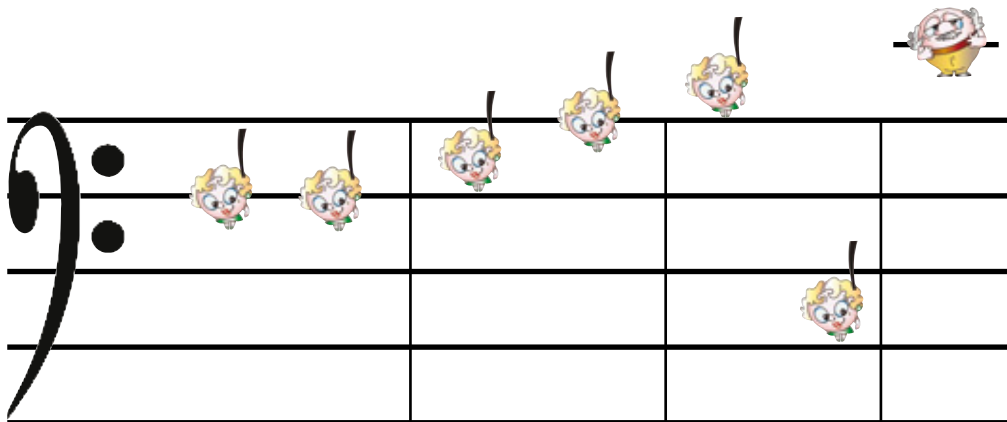
Make tunes on your board either with the Bass characters or the Rhythm family.

If you make a Rhythm pattern - clap it - then read the notes aloud.



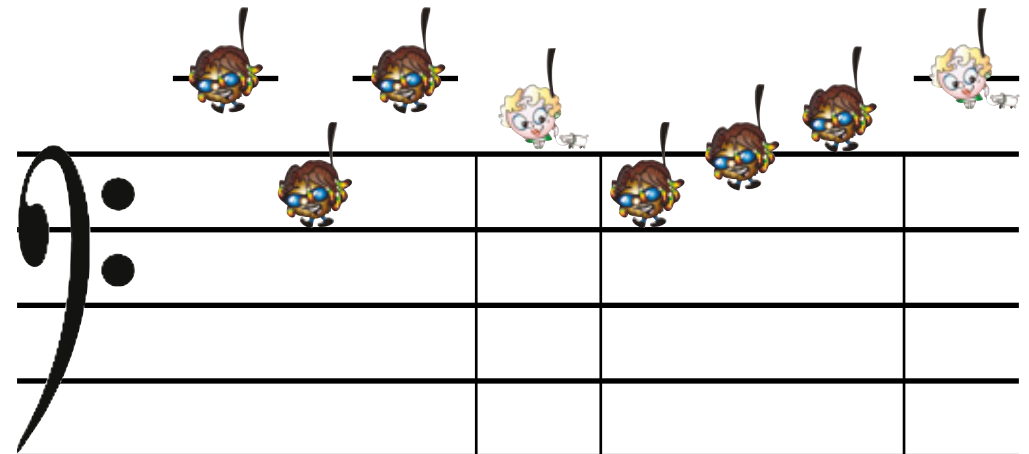
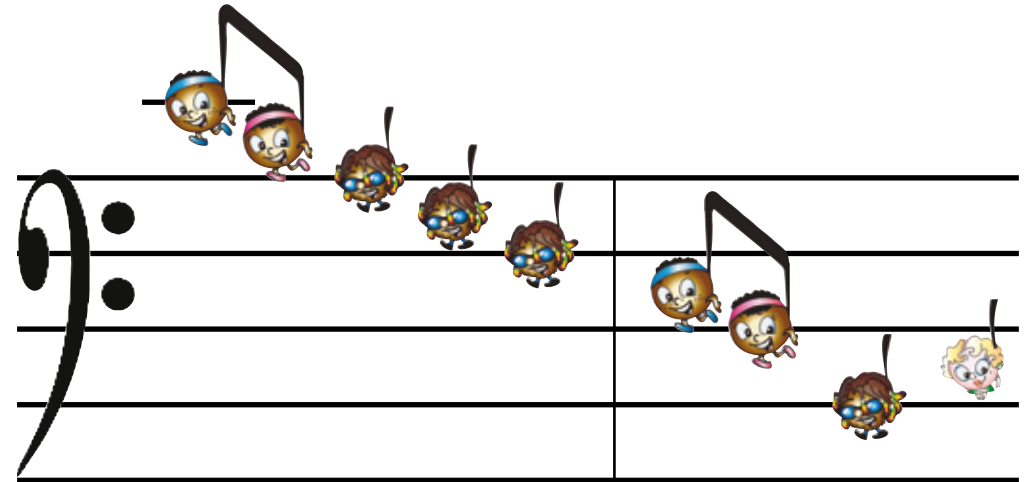
## Sheet 25

Here are some bass tunes to play and read aloud.



## Sheet 26

Here are some bass tunes to play and read aloud.





## Sheet 27

### Game 1

Put a note on your board.  
Find it on your instrument.

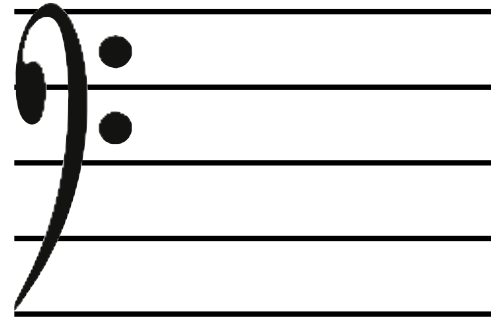
### Game 2

Put a note on your board.  
Find it on a page of music.

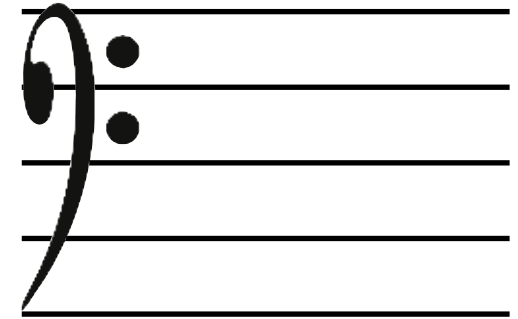


## Sheet 28

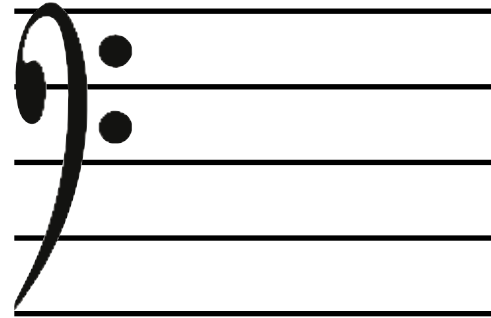
Spell the words in bass clef notes.



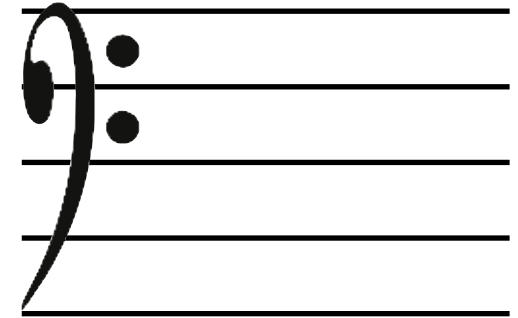
B e d



C a g e



B e e f

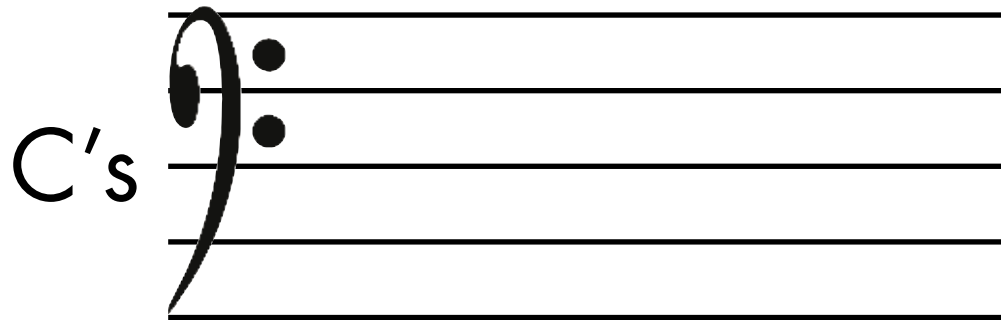
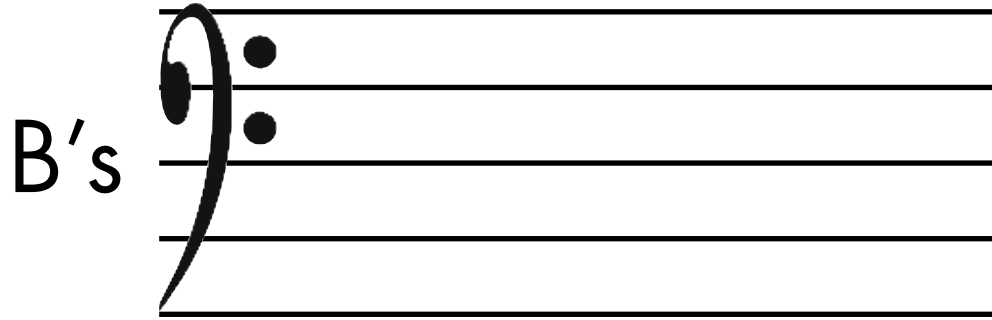


F a d e



## Sheet 29

Draw two different:-





**AMOS**



**ANEMONE**



**BEE**



**CELIA**



**CRAB**



**DUNSTAN**



**EEL**



**ELAINE**



**FERDIE**



**GUPPY**



**NOTEBUILDER**



**SEA SEARCHER**



**FATHER CROTCHET**



**QUAVER TWINS**



**UNCLE SEMIBREVE**



**MOTHER MINIM**



**MOTHER MINIM and her dog**